

LTE Mi-Fi Installation Guide



HUAWEI LTE Mi-Fi E5776

Getting Started

Installing

- Put the SIM in the Mi-Fi device where you see SIM Card
- Press the button above to turn on the Mi-Fi

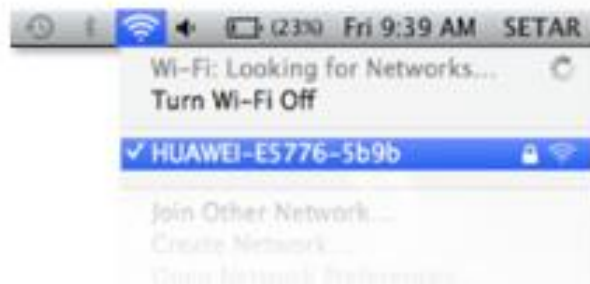


Note: Make sure if it's for a Prepaid client that the SIM is activated first (by making a Call) and deactivate the SIM PIN before you insert the SIM in the Mi-Fi (via a cell phone)

- Click on the Wi-Fi icon of your laptop or tablet and search for the Wi-Fi signal of your LTE Mi-Fi Hotspot
- To find out which signal is your Mi-Fi device, press twice on the WPS button on your Mi-Fi device which will display the SSID/Wi-Fi signal



- Click it to connect



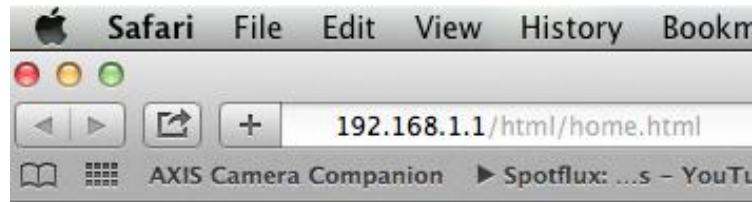
- Insert the WiFi KEY, which is written under the Mi-Fi, this is the password to connect your laptop/tablet with your Mi-Fi



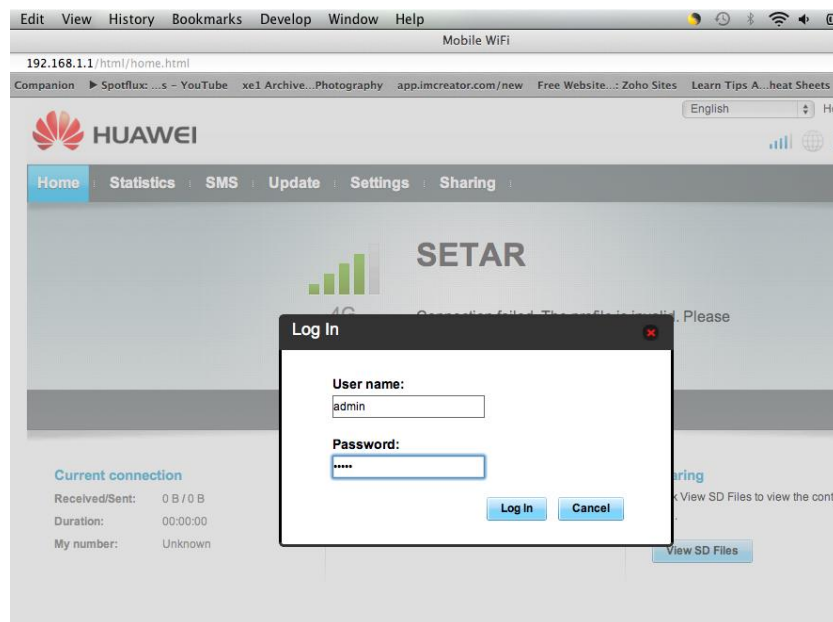
- Or you can press the WPS button 4 times, which will display the Wi-Fi KEY



open a website and type
192.168.1.1 then press **enter**

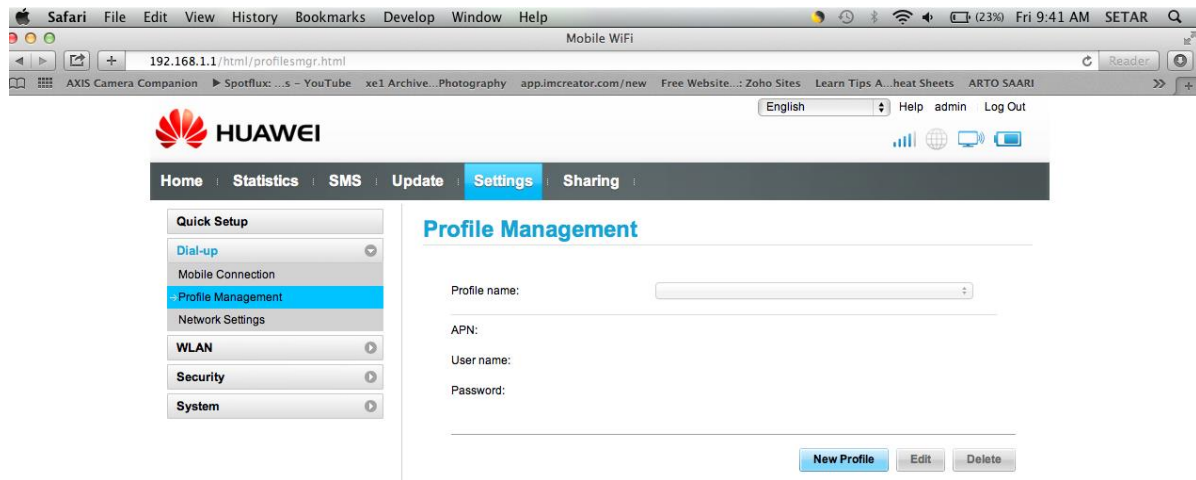


You will be redirected to the Mi-Fi's **dash board**, go to **settings** – for the **username** and **password** enter **admin** (small letters)



To set the device in Post or Prepaid:

Go to **Dial-up – Profile Management**



Click on **New Profile** – at profile name insert: **SETAR**

At APN: for **postpaid** type **internet.setar.aw** for **prepaid** type **prepaid.setar.aw** then click **Save**

If it's a postpaid – once you go on a website you will connect

If it's a prepaid – once you select a website, you will be redirected to SETAR's Prepaid Wireless Broadband page, where you need to either:

- buy a Wireless Broadband Prepaid Card in order to connect via **Prepaid Card** (available at all SETAR Teleshops and SETAR Store)
- Connect via your **Credit Card**

